

a

Retro Christmas Stocking

©2011 Simply Notable.com

top of stocking body

b

a



10"



c



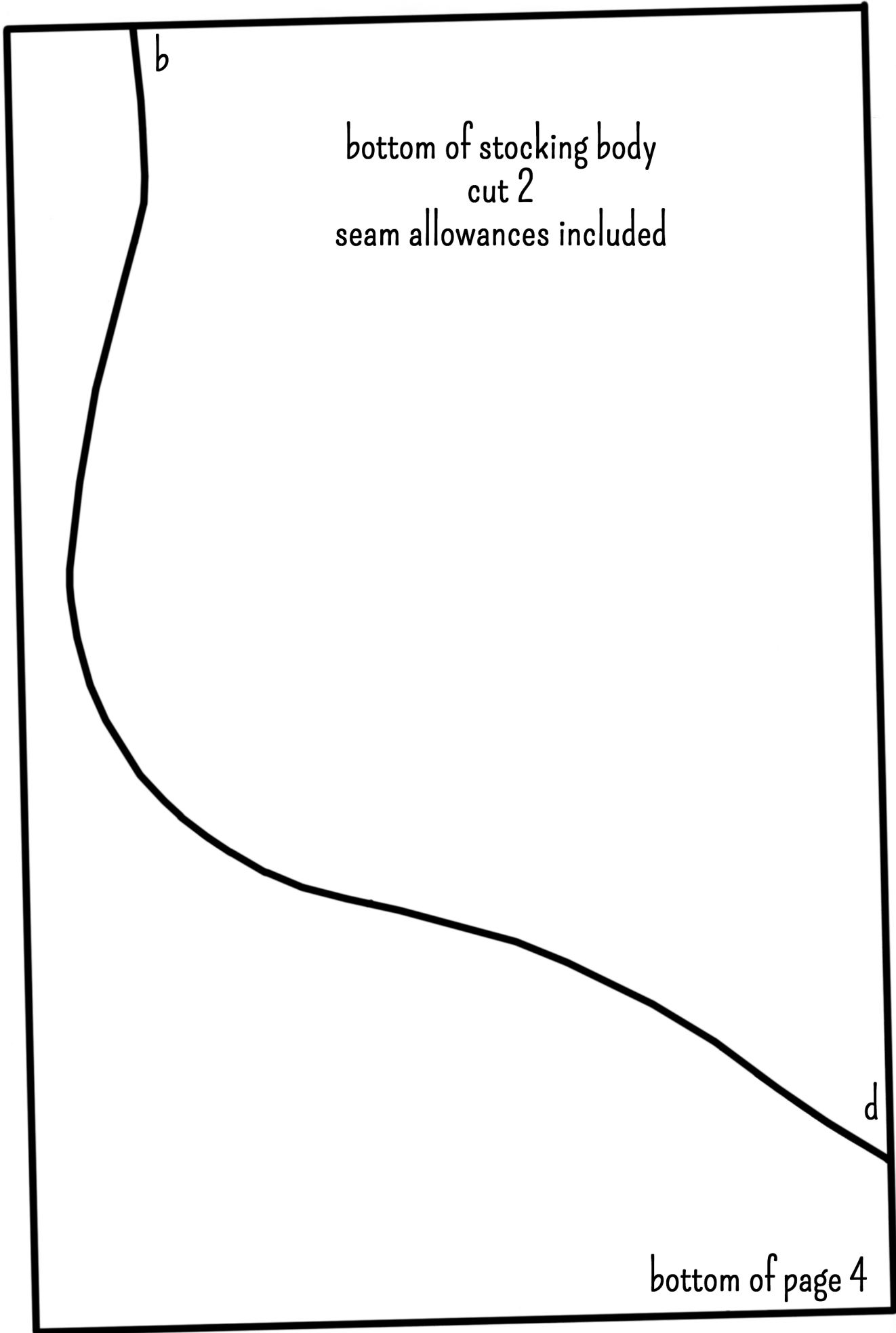
7 & 7/8"



Top of Stocking
cut 1 on fold
seam allowances included

c

⇐ cut on fold ⇒

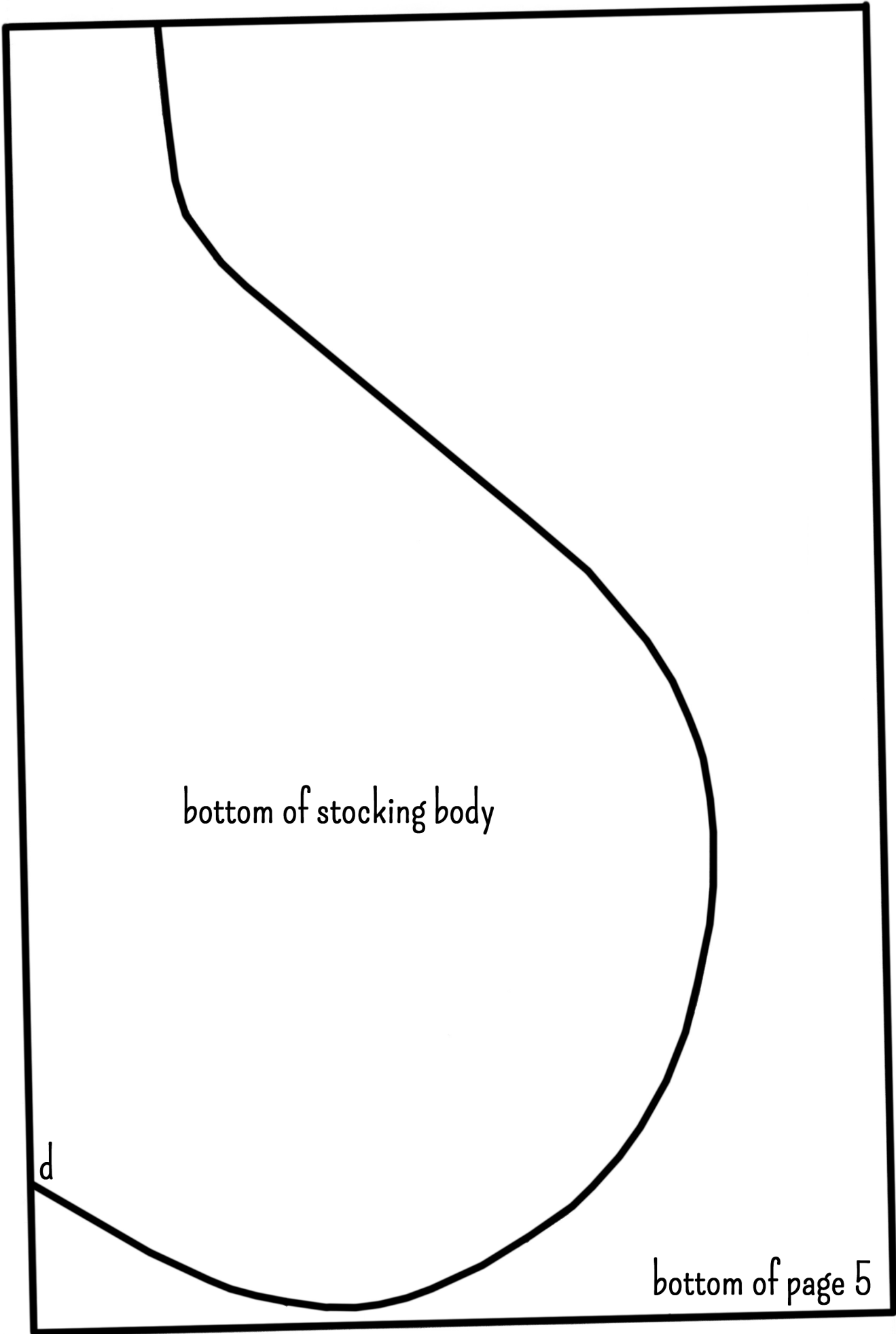


b

bottom of stocking body
cut 2
seam allowances included

d

bottom of page 4



bottom of stocking body

d

bottom of page 5